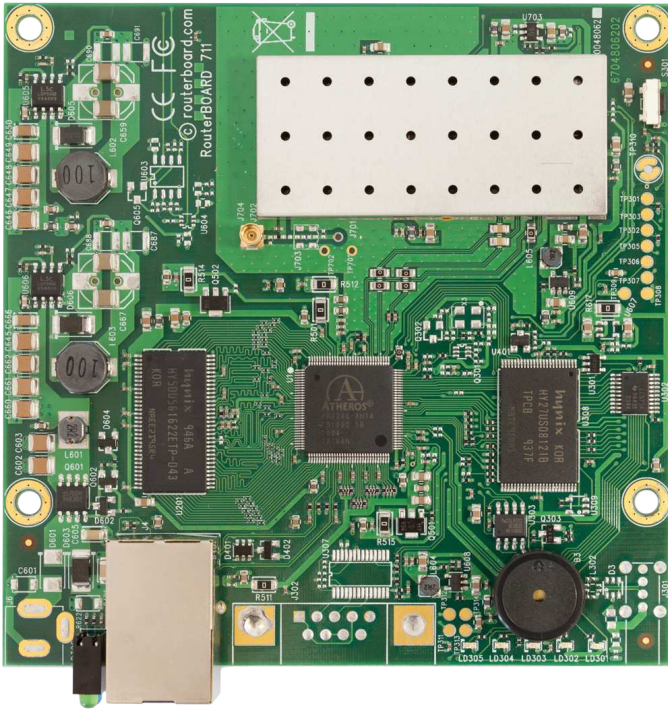


# RouterBOARD 711-5Hn

Perfect for building CPE devices



The RB711 is a small CPE type RouterBOARD wireless router with an integrated 5GHz 802.11a/n wireless card.

RB711 includes RouterOS - the operating system, which can be a router, firewall, bandwidth manager, a CPE and more - all at the same time.

This device is available either with a u.FL connector or a MMCX connector (models RB711-5Hn-MMXC and RB711-5Hn-uFL).

The integrated wireless card is capable of up to 23dBm transmit power output.

Built in 10kV ESD protection on RF port.

CPU	Atheros AR7240 400MHz network processor
Memory	32MB DDR SDRAM onboard memory
Boot loader	RouterBOOT
Data storage	64MB onboard NAND memory chip
Ethernet	One 10/100 Mbit/s Fast Ethernet port with Auto-MDI/X
miniPCI	none
Wireless	Built in 5GHz AR9280 802.11a/n card, 1 MMCX/uFL connector (depends on model)
Extras	Reset switch, Beeper
Serial port	none
LEDs	Power, NAND activity, 5 user LEDs
Power options	Power over Ethernet: 10..28V DC (except power over datalines). No power jack
Dimensions	10.5 cm x 10.5 cm (4.13 in x 4.13 in) Weight: 67g
Power consumption	Up to 4.5W at 18V full load (0.245A)
Operating System	MikroTik RouterOS v4, Level3 license

RX sensitivity	<b>802.11a:</b> -92 dBm @ 6Mbps to -76 dBm @ 54 Mbps <b>802.11n:</b> -92 dBm @ MCS0 to -73 dBm @ MCS7
TX power	<b>802.11a:</b> 23dBm @ 6Mbps to 19dBm @ 54 Mbps <b>802.11n:</b> 22dBm @ MCS0 to 15dBm @ MCS7
Modulations	OFDM: BPSK, QPSK, 16 QAM, 64QAM DSSS: DBPSK, DQPSK, CCK